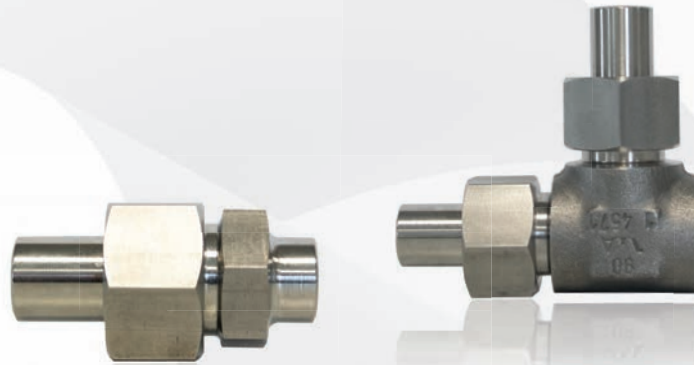


■ DILO UNIONS FOR PRESSURE RANGES  
from 640 up to 1000 bar



DILO tube unions for pressures up to 640 bar (M6 series) and up to 1000 bar (M10 series) are available in straight version with weld-on ends, metric screw-in thread and Whitworth screw-in thread.

Furthermore, these series also include angle pieces with weld-on ends, Tee pieces with weld-on stubs, gauge connecting unions as well as blanking and throttle disks.

Temperature resistance of the unions: from -270°C bis 500°C depending on the material used.

DILO UNIONS FOR PRESSURE RANGES FROM 640  
UP TO 1000 BAR

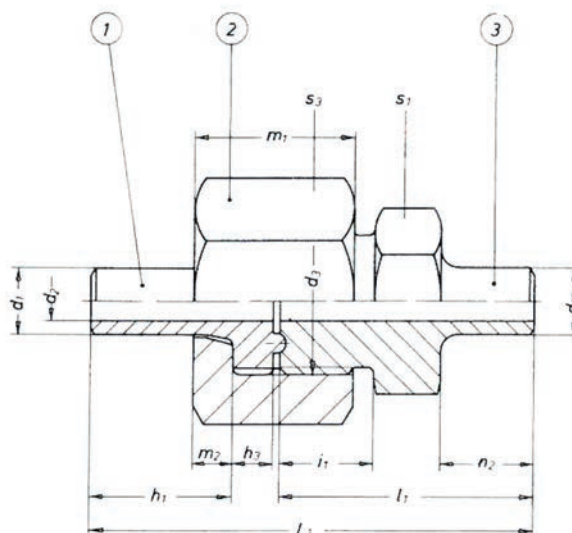
M6A	Weld-on tube union PN640.....	88
M6B	Screw-in tube union with metric thread PN640.....	89
M6B-G	Screw-in tube union with Whitworth thread PN640.....	90
M6AW	Angle weld-on union PN640.....	91
M6AT	T-weld on union PN640.....	92
M6M-G	Manometer connection union PN640.....	93
M6piece8	Blanking disks / Throttle disks PN640.....	94
M6HAV	Screw-in tube union with metric thread PN640.....	95
M10A	Screw-in tube union PN1000.....	96
M10B	Screw-in tube union with metric thread PN1000.....	97
M10B-G	Screw-in tube union with Whitworth thread PN1000.....	98
M10AW	Angle weld-on union PN1000.....	99
M10AT	T-weld on union PN1000.....	100
M10M-G	Manometer connection union PN1000.....	101
M10piece8	Blanking disks / Throttle disks PN1000.....	102





## PN640

### Weld-on tube union



- With weld-on ends
- Available for tube diameters from DN 4 up to DN 25
- Temperature-resistant from -270 °C up to +500 °C
- Available for pressures up to 1.000 bar on request
- Available in DIN EN materials: 1.0460, 1.4571, 1.7335, 1.4903 and 1.4901
- Three-part union consisting of weld-on stub, clamping nut and weld-on screw stub

DN	$d_1$	$d_2$	$d_3$	$d_{12}$	$L_1$	$l_1$	$h_1$	$h_3$	$m_1$	$m_2$	$n_2$	$i_1$	$s_1$	$s_3$	Order ref. no.
4	10	4	M 20x1,5	10	59	33	19,5	5	21	5	12	13	22	27	M6A 4
6	10	6	M 22x1,5	10	67	38	21,5	6	24	6	14	14	24	32	M6A 6
8	13,5	8	M 26x1,5	13,5	76	41	26,5	7	28	7	14	16	27	36	M6A 8
10	17	10	M 30x2	17	85	46	29,5	8	32	8	15	19	32	41	M6A 10
12	20	12	M 33x2	20	101	54	35,5	10	38	11	20	20	36	46	M6A 12
16	25	15	M 42x2	25	111	61	38,5	10	41	12	24	22	46	46	M6A 16
20	30	18	M 45x2	30	138	72	52,5	11	55	14	24	32	46	60	M6A 20
25	38	23	M 52x2	38	151	78	57,5	13	62	17	28	33	55	65	M6A 25

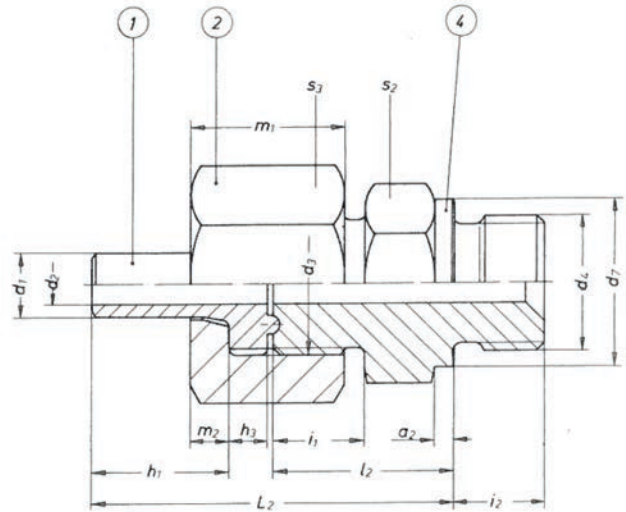
Component	Designation	Order ref. no.
1	Weld-on stub	M6 - (DN) - 1
2	Clamping nut	M6 - - 2
3	Weld-on screw stub	M6 - - 3

Materials: see „Material standards“ page 7





**PN640**  
Screw-in tube union with metric thread



- With weld-on end and screw-in thread
- Available for tube diameters from DN 4 up to DN 25
- Temperature-resistant from -270 °C up to +500 °C (dependant on the material used)
- Available in DIN EN materials: 1.0460, 1.4571, 1.7335, 1.4903 and 1.4901
- Three-part union consisting of weld-on stub, clamping nut and screw-in stub

DN	d <sub>1</sub>	d <sub>2</sub>	d <sub>3</sub>	d <sub>4</sub>	d <sub>7</sub>	L <sub>2</sub>	l <sub>2</sub>	h <sub>1</sub>	h <sub>3</sub>	m <sub>1</sub>	m <sub>2</sub>	i <sub>1</sub>	i <sub>2</sub>	a <sub>2</sub>	s <sub>2</sub>	s <sub>3</sub>	Order ref. no.
4	10	4	M 20x1,5	M 22x1,5	27	54	28	19,5	5	21	5	13	14	3	27	27	M6B 4
6	10	6	M 22x1,5	M 22x1,5	27	57	28	21,5	6	24	6	14	14	3	27	32	M6B 6
8	13,5	8	M 26x1,5	M 27x2	32	67	32	26,5	7	28	7	16	16	3	32	36	M6B 8
10	17	10	M 30x2	M 33x2	39	76	37	29,5	8	32	8	19	18	3	41	41	M6B 10
12	20	12	M 33x2	M 42x2	49	87	40	35,5	10	38	11	20	20	3	50	46	M6B 12
16	25	15	M 42x2	M42x2	49	93	43	38,5	10	41	12	22	20	3	50	55	M6B 16
20	30	18	M 45x2	M 48x2	55	120	54	52,5	11	55	14	32	22	3	55	60	M6B 20
25	38	23	M 52x2	M 56x2	64	131	58	57,5	13	62	17	33	24	3	65	65	M6B 25

Component	Designation	Order ref. no.
1	Weld-on stub	M6 - (DN) - 1
2	Clamping nut	M6 - - 2
4	screw-in stub	M6 - - 4

Materials: see „Material standards“ page 7

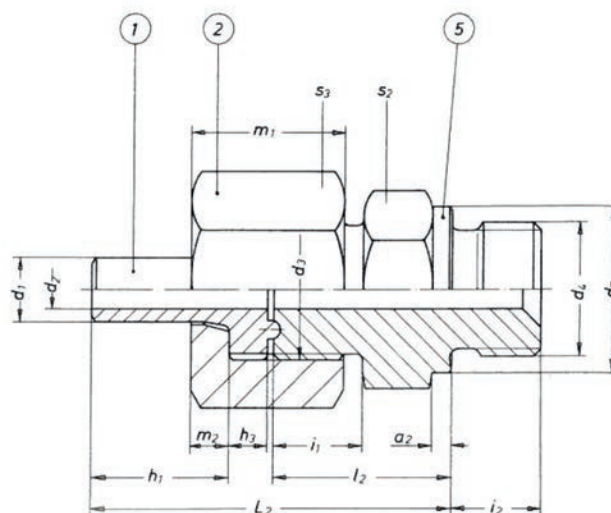
Materials: see „Material standards“ page 74





## PN640

### Screw-in tube union with Whitworth thread



- With weld-on end and screw-in thread
- Available for tube diameters from DN 4 up to DN 25
- Temperature-resistant from -270 °C up to +500 °C (dependant on the material used)
- Available for pressures up to 1.000 bar on request
- Available in DIN EN materials: 1.0460, 1.4571, 1.7335, 1.4903 and 1.4901
- Three-part union consisting of weld-on stub, clamping nut and screw-in stub

DN	$d_1$	$d_2$	$d_3$	$d_4$	$d_7$	$L_2$	$l_2$	$h_1$	$h_3$	$m_1$	$m_2$	$i_1$	$i_2$	$a_2$	$s_2$	$s_3$	Order ref. no.
4	10	4	M 20x1,5	G ½ A	26	54	28	19,5	5	21	5	13	13	3	27	27	M6B 4G
6	10	6	M 22x1,5	G ½ A	26	57	28	21,5	6	24	6	14	14	3	27	32	M6B 6G
8	13,5	8	M 26x1,5	G ¾ A	32	67	32	26,5	7	28	7	16	16	3	32	36	M6B 8G
10	17	10	M 30x2	G 1 A	39	76	37	29,5	8	32	8	19	18	3	41	41	M6B 10G
12	20	12	M 33x2	G ¼ A	49	87	40	35,5	10	38	11	20	20	3	50	46	M6B 12G
16	25	15	M 42x2	G ¼ A	49	93	43	38,5	10	41	12	22	20	3	50	55	M6B 16G
20	30	18	M 45x2	G ½ A	55	120	54	52,5	11	55	14	32	22	3	55	60	M6B 20G
25	38	23	M 52x2	G ¾ A	62	131	58	57,5	13	62	17	33	24	3	65	65	M6B 25G

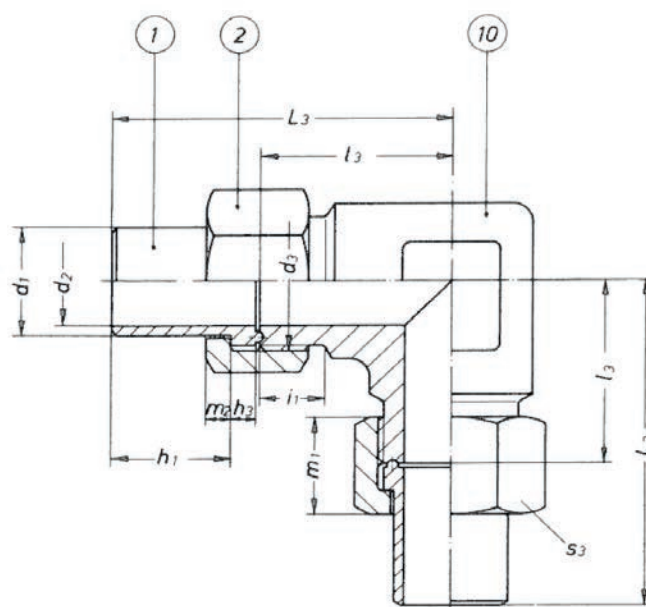
Component	Designation	Order ref. no.
1	Weld-on stub	M6 - (DN) - 1
2	Clamping nut	M6 - - 2
5	screw-in stub	M6 - - 5

Materials: see „Material standards“  
page 74





PN640  
Angle weld-on union



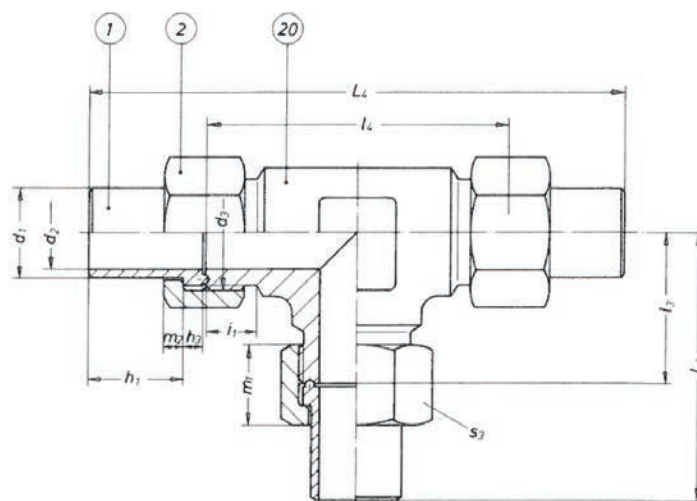
DN	$d_1$	$d_2$	$d_3$	$L_3$	$l_3$	$h_1$	$h_3$	$m_1$	$m_2$	$i_1$	$s_3$	Order ref. no.
4	10	4	M 20x1,5	56	30	19,5	5	21	5	13	27	M6AW 4
6	10	6	M 22x1,5	61	32	21,5	6	24	6	14	32	M6AW 6
8	13,5	8	M 26x1,5	80	45	26,5	7	28	7	16	36	M6AW 8
10	17	10	M 30x2	84	45	29,5	8	32	8	19	41	M6AW 10
12	20	12	M 33x2	92	45	35,5	10	38	11	20	46	M6AW 12
16	25	15	M 42x2	105	55	38,5	10	41	12	22	55	M6AW 16
20	30	18	M 45x2	131	65	52,5	11	55	14	32	60	M6AW 20
25	38	23	M 52x2	148	75	57,5	13	62	17	33	65	M6AW 25

Pieces	Component	Designation	Order ref. no.
2	1	Weld-on stub	M6 - (DN) - 1
2	2	Clamping nut	M6 - -2
1	10	Angle	M6 - -10





PN640  
T-weld on union



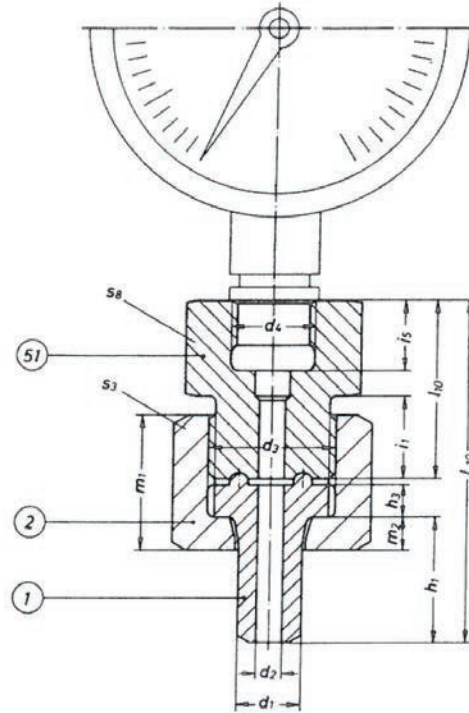
DN	$d_1$	$d_2$	$d_3$	$L_3$	$l_3$	$L_4$	$l_4$	$h_1$	$h_3$	$m_1$	$m_2$	$i_1$	$s_3$	Order ref. no.
4	10	4	M 20x1,5	56	30	112	60	19,5	5	21	5	13	27	M6AT 4
6	10	6	M 22x1,5	61	32	122	64	21,5	6	24	6	14	32	M6AT 6
8	13,5	8	M 26x1,5	80	45	160	90	26,5	7	28	7	16	36	M6AT 8
10	17	10	M 30x2	84	45	168	90	29,5	8	32	8	19	41	M6AT 10
12	20	12	M 33x2	92	45	184	90	35,5	10	38	10	20	46	M6AT 12
16	25	15	M 42x2	105	55	210	110	38,5	10	41	10	22	55	M6AT 16
20	30	18	M 45x2	131	65	262	130	52,5	11	55	11	32	60	M6AT 20
25	38	23	M 52x2	148	75	296	150	57,5	13	62	13	33	65	M6AT 25

Pieces	Component	Designation	Order ref. no.
3	1	Weld-on stub	M6 - (DN) - 1
3	2	Clamping nut	M6 - - 2
1	20	T-piece	M6 - - 20





PN640  
Manometer connection union



DN	d <sub>1</sub>	d <sub>2</sub>	d <sub>3</sub>	d <sub>4</sub>	L <sub>10</sub>	l <sub>10</sub>	h <sub>1</sub>	h <sub>3</sub>	m <sub>1</sub>	m <sub>2</sub>	i <sub>1</sub>	i <sub>5</sub>	s <sub>3</sub>	s <sub>8</sub>	Order ref. no.
8	13,5	8	M 26x1,5	G ½	75	40	26,5	7	28	7	16	16	36	32	M6M 8 / 51

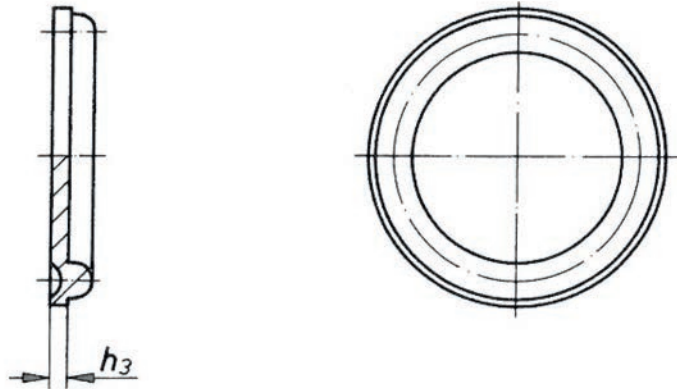
Component	Designation	Order ref. no.
1	Weld-on stub	M6 - (DN) - 1
2	Clamping nut	M6 - - 2
51	Manometer connection piece	M6 - - 51





■ PN640

Blanking disks / Throttle disks



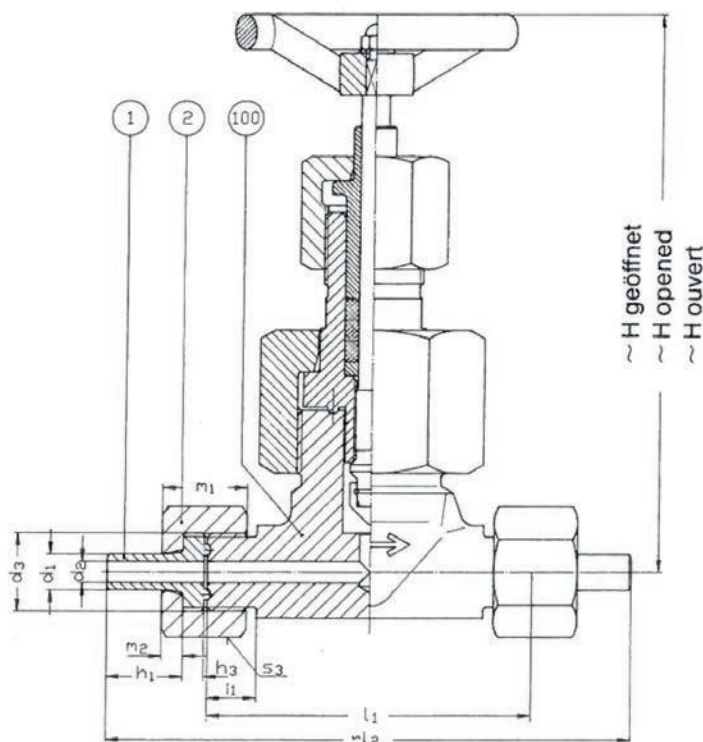
DN	$h_3$	Order ref. no.
4	3	M6 - 4 - 8
6	3,5	M6 - 6 - 8
8	4	M6 - 8 - 8
10	4,5	M6 - 10 - 8
12	5,5	M6 - 12 - 8
16	5,5	M6 - 16 - 8
20	6	M6 - 20 - 8
25	6,5	M6 - 25 - 8







PN640  
Manual blocking valve



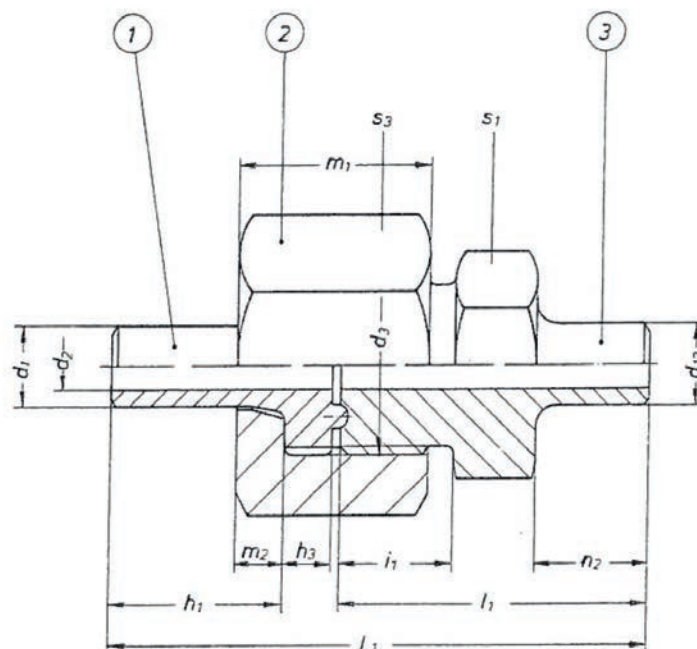
DN	$d_1$	$d_2$	$d_3$	$l_1$	$\sim l_2$	$h_1$	$h_3$	$m_1$	$m_2$	$i_1$	$s_3$	$\sim H$	Order ref. no.
4	10	4	M 20x1,5	92	143	19,5	5	21	5	13	27	158	M6-HAV- 4
6	10	6	M 22x1,5	92	149	21,5	6	24	6	14	32	158	M6-HAV- 6
10	17	10	M 30x2	130	207	29,5	8	32	8	19	41	216	M6-HAV-10
16	25	15	M 42x2	130	229	38,5	10	41	12	22	55	216	M6-HAV-16

Pieces	Component	Designation	Order ref. no.
2	1	Weld-on stub	M6 - (DN) - 1
2	2	Clamping nut	M6 - - 2
1	100	Manual blocking valve	M6 - - 100





PN1000  
Screw-in tube union



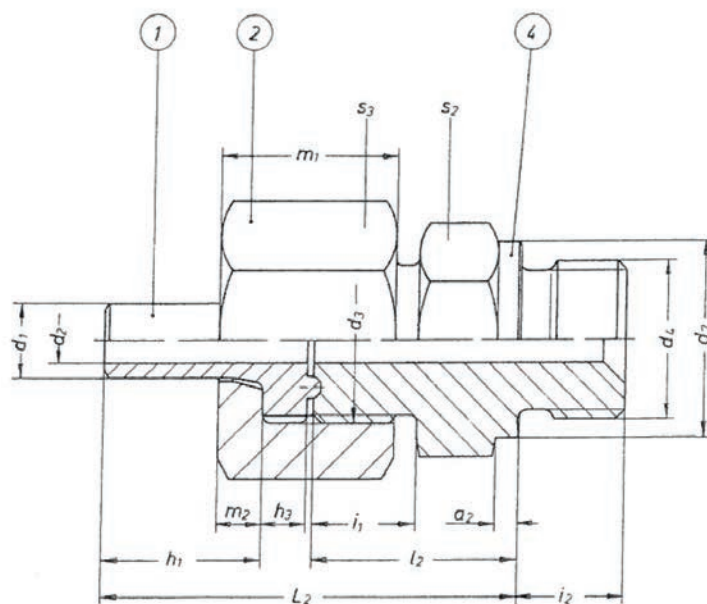
DN	$d_1$	$d_2$	$d_3$	$d_{12}$	$L_1$	$l_1$	$h_1$	$h_3$	$m_1$	$m_2$	$n_2$	$i_1$	$s_1$	$s_3$	Order ref. no.
4	10	3,5	M 22x1,5	10	77	42	27,5	6	28	6	14	18	24	32	M10A 4
6	13,5	6	M 26x1,5	13,5	89	47	33,5	7	34	7	14	22	27	36	M10A 6
8	17	8	M 30x2	17	106	56	40,5	8	41	8	16	28	32	41	M10A 8
10	20	10	M 33x2	20	113	62	39,5	10	45	11	20	28	36	46	M10A 10
12	25	12	M 42x2	25	135	72	51,5	10	52	12	24	33	46	55	M10A 12
16	30	15	M 45x2	30	142	76	52,5	11	58	14	24	35	46	60	M10A 16
20	38	18	M 52x2	38	162	82	64,5	13	65	17	28	37	55	65	M10A 20

Component	Designation	Order ref. no.
1	Weld-on stub	M10 - (DN) - 1
2	Clamping nut	M10 - - 2
3	Screw-in stub	M10 - - 3





■ PN1000  
Screw-in tube union with metric thread



DN	d <sub>1</sub>	d <sub>2</sub>	d <sub>3</sub>	d <sub>4</sub>	d <sub>7</sub>	L <sub>2</sub>	l <sub>2</sub>	h <sub>1</sub>	h <sub>3</sub>	m <sub>1</sub>	m <sub>2</sub>	i <sub>1</sub>	i <sub>2</sub>	a <sub>2</sub>	s <sub>2</sub>	s <sub>3</sub>	Order ref. no.
4	10	3,5	M 22x1,5	M 22x1,5	27	70	35	27,5	6	28	6	18	14	3	27	32	M10B 4
6	13,5	6	M 26x1,5	M 27x2	32	80	38	33,5	7	34	7	22	16	3	32	36	M10B 6
8	17	8	M 30x2	M 33x2	39	97	47	40,5	8	41	8	28	18	3	41	41	M10B 8
10	20	10	M 33x2	M 42x2	49	101	50	39,5	10	45	11	28	20	3	50	46	M10B 10
12	25	12	M 42x2	M 42x2	49	118	55	51,5	10	52	12	33	20	3	50	55	M10B 12

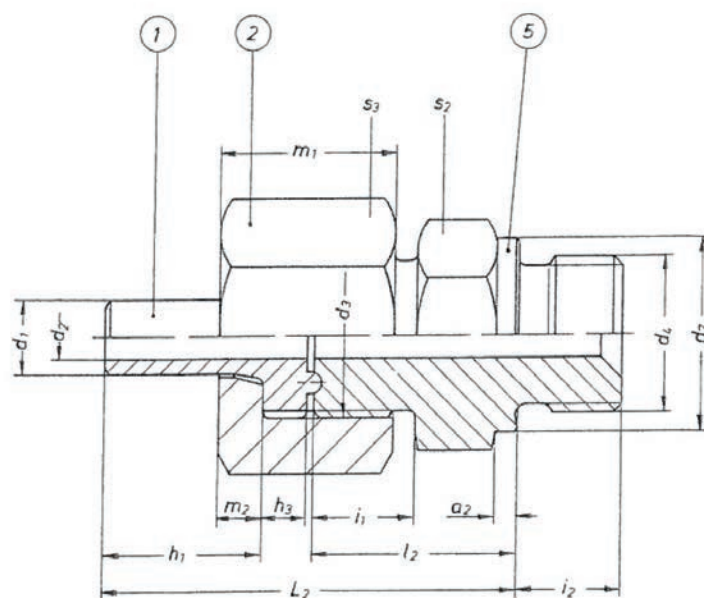
Pieces	Component	Designation	Order ref. no.
1	Weld-on stub	M10 - (DN) - 1	_____
2	Clamping nut	M10 - - 2	_____
4	Screw-in stub	M10 - - 4	_____

Materials: see „Material standards“  
page 74





PN1000  
Screw-in tube union with Whitworth thread



DN	d <sub>1</sub>	d <sub>2</sub>	d <sub>3</sub>	d <sub>4</sub>	d <sub>7</sub>	L <sub>2</sub>	l <sub>2</sub>	h <sub>1</sub>	h <sub>3</sub>	m <sub>1</sub>	m <sub>2</sub>	i <sub>1</sub>	i <sub>2</sub>	a <sub>2</sub>	s <sub>2</sub>	s <sub>3</sub>	Order ref. no.
4	10	3,5	M 22x1,5	G ½ A	26	70	35	27,5	6	28	6	18	14	3	27	32	M10B 4G
6	13,5	6	M 26x1,5	G ¾ A	32	80	38	33,5	7	34	7	22	16	3	32	36	M10B 6G
8	17	8	M 30x2	G 1 A	39	97	47	40,5	8	41	8	28	18	3	41	41	M10B 8G
10	20	10	M 33x2	G ¼ A	49	101	50	39,5	10	45	11	28	20	3	50	46	M10B 10G
12	25	12	M 42x2	G ¼ A	49	118	55	51,5	10	52	12	33	20	3	50	55	M10B 12G

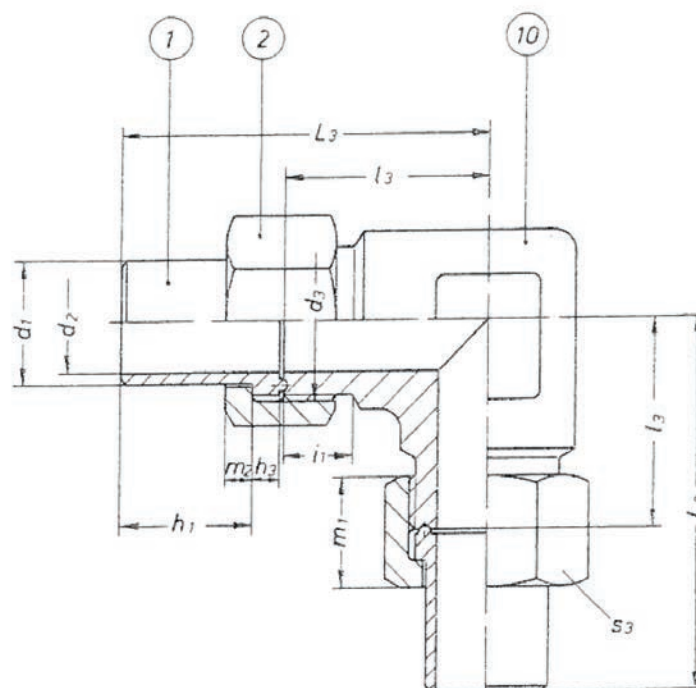
Component	Designation	Order ref. no.
1	Weld-on stub	M10 - (DN) - 1
2	Clamping nut	M10 - - 2
5	Screw-in stub	M10 - - 5

Materials: see „Material standards“  
page 74





PN1000  
Angle weld-on union



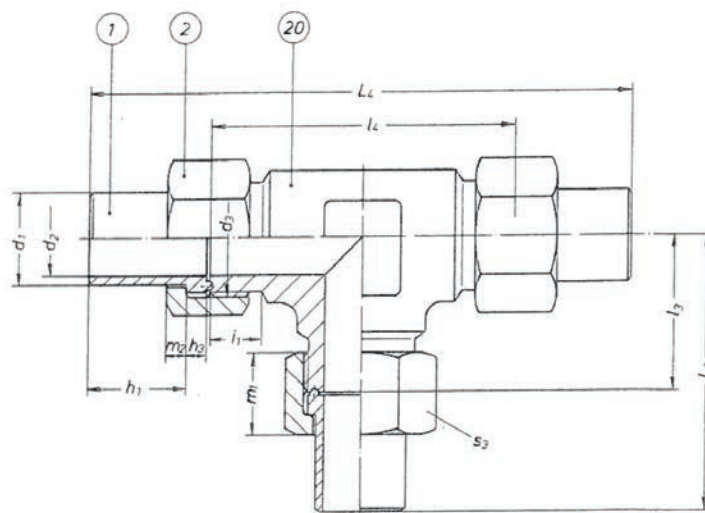
DN	$d_1$	$d_2$	$d_3$	$L_3$	$l_3$	$h_1$	$h_3$	$m_1$	$m_2$	$i_1$	$s_3$	Order ref. no.
4	10	3,5	M 22x1,5	69	35	27,5	6	28	6	18	32	M10AW 4
6	13,5	6	M 26x1,5	87	45	33,5	7	34	7	22	36	M10AW 6
8	17	8	M 30x2	102	52	40,5	8	41	8	28	41	M10AW 8
10	20	10	M 33x2	103	52	39,5	10	45	11	28	46	M10AW 10
12	25	12	M 42x2	127	64	51,5	10	52	12	33	55	M10AW 12
16	30	14	M 45x2	131	65	52,5	11	58	14	35	60	M10AW 16
20	38	18	M 52x2	155	75	64,5	13	65	17	37	65	M10AW 20

Pieces	Component	Designation	Order ref. no.
2	1	Weld-on stub	M6 - (DN) - 1
2	2	Clamping nut	M6 - -2
1	10	Angle	M6 - -10





PN1000  
T-weld on union



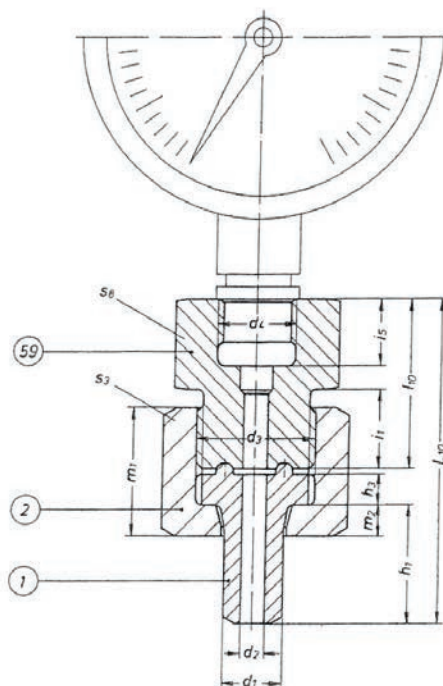
DN	$d_1$	$d_2$	$d_3$	$L_3$	$l_3$	$L_4$	$l_4$	$h_1$	$h_3$	$m_1$	$m_2$	$i_1$	$s_3$	Order ref. no.
4	10	3,5	M 22x1,5	69	35	138	68	27,5	6	28	6	18	32	M10AT 4
6	13,5	6	M 26x1,5	87	45	174	90	33,5	7	34	7	22	36	M10AT 6
8	17	8	M 30x2	102	52	204	104	40,5	8	41	8	28	41	M10AT 8
10	20	10	M 33x2	103	52	206	104	39,5	11	45	10	28	46	M10AT 10
12	25	12	M 42x2	127	64	254	128	51,5	12	52	10	33	55	M10AT 12
16	30	14	M 45x2	131	65	262	130	52,5	14	58	11	35	60	M10AT 16
20	38	18	M 52x2	155	75	310	150	64,5	17	65	17	37	65	M10AT 20

Pieces	Component	Designation	Order ref. no.
3	1	Weld-on stub	M10 - (DN) - 1
3	2	Clamping nut	M10 - - 2
1	20	T-piece	M10 - - 100





PN1000  
Manometer connection union



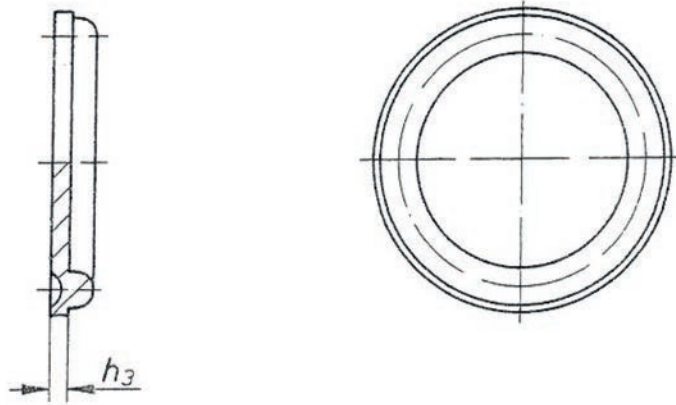
DN	d <sub>1</sub>	d <sub>2</sub>	d <sub>3</sub>	d <sub>4</sub>	L <sub>10</sub>	l <sub>10</sub>	h <sub>1</sub>	h <sub>3</sub>	m <sub>1</sub>	m <sub>2</sub>	i <sub>1</sub>	i <sub>5</sub>	s <sub>3</sub>	s <sub>8</sub>	Order ref. no..
8	17	8	M 30x2	G ½	102	52	40,5	8	41	8	28	16	41	36	M10M 8 / 51

Component	Designation	Order ref. no.
1	Weld-on stub	M10 - (DN) - 1
2	Clamping nut	M10 - - 2
51	Manometer connection piece	M10 - - 51





■ PN1000  
Blanking disks / Throttle disks



DN	$h_3$	Order ref. no..
4	4	M10 - 4 - 8
6	4,5	M10 - 6 - 8
8	5	M10 - 8 - 8
10	6	M10 - 10 - 8
12	6	M10 - 12 - 8
16	6,5	M10 - 16 - 8
20	7	M10 - 20 - 8

