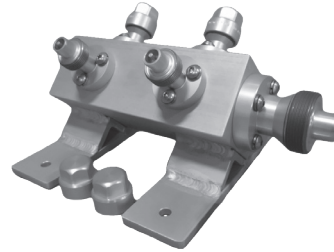




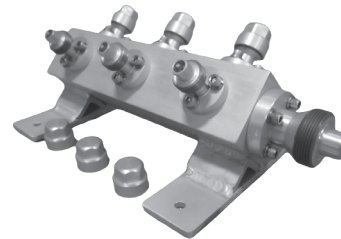
MULTI-PORT CYLINDER MANIFOLD

These manifolds are the ideal tool whenever the use of multiple cylinders are needed. Through extensive R&D, we created a block that maintains equal filling on all ports, so no one cylinder is favored in the system. All manifold options are rated for 1,000 PSIG and come equipped with self-sealing DILO couplers, wire-braided service hoses, and DILO ball valves with CGA590 cylinder connectors (the US standard for SF₆). In addition, they come packaged in their own lightweight weatherproof flight case with custom-cut foam for the manifold and hoses.

- DILO DN20 Input Connector
- DILO DN8 Output Connector
- Aluminum protective valve caps
- Light weight aluminum design
- Keep all of your manifold equipment in one case
- Rugged waterproof flight case included
- 5' DN8 wire-braided service hose with hermetically sealed ball valve and CGA-590 coupling



D-240-R003 4-port cylinder manifold
4 x DN8 / 1 x DN20



D-260-R003 6-port cylinder manifold
6 x DN8 / 1 x DN20

Technical Data D-240-R003:

Dimensions:	8" L, 7" W, 5" H (203 x 178 x 127 mm)
Weight:	9 lbs (4.08 kg)
Case Dimensions:	14" L, 18" W, 8" H (356 x 457 x 203 mm)
Total Weight:	30.5 lbs (13.83 kg)
Maximum Pressure:	1,000 PSIG
Material:	Aluminum

Technical Data D-260-R003:

Dimensions:	13.5" L, 8" W, 5" H (343 x 203 x 127 mm)
Weight:	11 lbs (4.99 kg)
Case Dimensions:	17" L, 21" W, 8" H (432 x 533 x 203 mm)
Total Weight:	39.5 lbs (17.92 kg)
Maximum Pressure:	1,000 PSIG
Material:	Aluminum